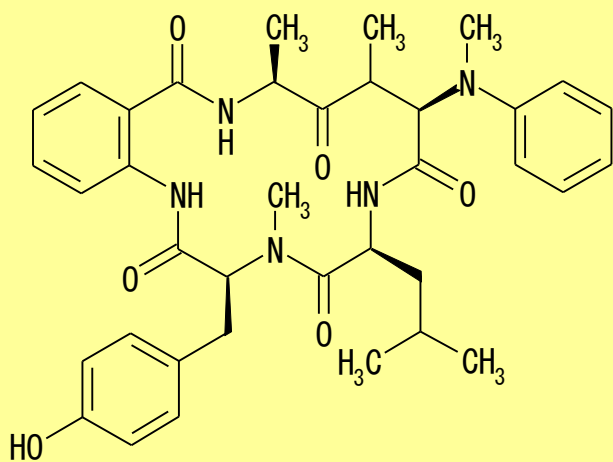


Cycloaspeptide A

Cat.# BLK0420

Structure

Origin: *Gliocladium* sp.

CAS Registry Number: 109171-13-3

CA Index Name: N-Methylcyclo[L-Tyr-2-amino*benzoyl-L-Ala-N-methyl-L-Phe-L-Leu-]

Appearance: white crystalline

Molecular Formula/ Weight: C₃₆H₄₃N₅O₆=641.77

Melting Point: 275-277°C Purity:>95% by HPLC

Solubility: Sol. 1mg/ml ethanol, methanol, DMSO

pKa:

log P:

Background Information:

Cycloaspeptides were isolated from *Aspergillus* sp. NE-45¹⁾, *Penicillium ribeum*²⁾, *Tricothecium* strain³⁾ and other microorganisms, and cyclic peptide antibiotics. Cycloaspeptide A and D exhibited moderate activity (IC₅₀ 3.5 and 4.7 microg/ml, respectively) against *Plasmodium falciparum*.⁴⁾ Cycloaspeptide A showed low cytotoxicity towards human lung fibroblasts with IC₅₀ > or = 1000 microM.⁵⁾ Cycloaspeptides are solubilized in methanol or benzene, but insoluble in water.

Handling and Storage:

Store at -20°C.

References:

1. Kobayashi et. al., Chem Pharm Bull. **35**, 1347-1352 (1987).
2. P. W. Dalsgaard, J. Nat. Prod. **67**, 878-881 (2004).
3. P. Lewer, et. al., J. Nat. Prod. **69**, 1506-1510 (2006).
4. P. W. Dalsgaard, et. al., J. Antibiot. (Tokyo). **58**, 141-144 (2005).
5. G. Schmeda-Hirschmann, et. al., Z. Naturforsch [C]. **63**, 383-388 (2008).

Manufactured with Cortesy strain from The Kitasato Institute.